

Indilok[®]

PRODUCT CATALOGUE



INDEX

Face Vacuum Fittings



Gland
Face Seal Fittings

Pg. 10



Male Union
Face Seal Fittings

Pg. 14



Blind Gland
Face Seal Fittings

Pg. 11



Male Elbow
Face Seal Fittings

Pg. 14



Female Nut
Face Seal Fittings

Pg. 12



Male Tee
Face Seal Fittings

Pg. 15



Male Nut
Face Seal Fittings

Pg. 12



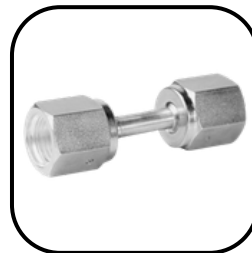
Male Cross
Face Seal Fittings

Pg. 15



Blind Female Nut
Face Seal Fittings

Pg. 13



Weld Female Union
Micro Weld Fittings

Pg. 16



Blind Male Nut
Face Seal Fittings

Pg. 13



Weld Female Elbow
Micro Weld Fittings

Pg. 16



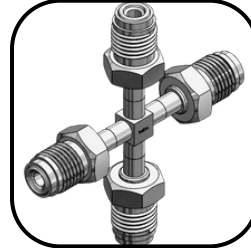
Weld Female Tee Pg. 17
Micro Weld Fittings



Weld Male Elbow Pg. 18
Face Seal Fittings



Weld Female Cross Pg. 17
Face Seal Fittings



Weld Male Cross Pg. 19
Face Seal Fittings



Weld Male Union Pg. 18
Face Seal Fittings



Weld Male Tee Pg. 19
Face Seal Fittings

Micro Weld Fittings



Elbow Pg. 22
Micro Weld Fittings



Tee Pg. 23
Micro Weld Fittings



Cross Pg. 22
Micro Weld Fittings



Angled Tee Pg. 23
Face Seal Fittings



Reducer Pg. 24
Micro Weld Fittings

International ConFlat (ICF) Flange



ICF Blank Flange
Flanges

Pg. 25



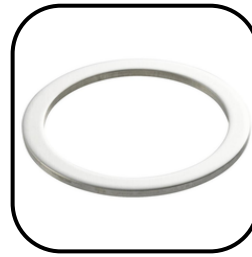
**ICF Double Side
Blank Flange**
Flanges

Pg. 27



**ICF Perforated
Flange**
Flanges

Pg. 26



ICF Gasket
Gasket

Pg. 28

NW/KF Flange



NW/KF Blind Flange

Pg. 29



NW/KF TEE

Pg. 35



NW/KF Short/Long Flange

Pg. 30



NW/KF Reducer

Pg. 36



NW/KF Perforated Flange

Pg. 31



NW/KF Centre Ring

Pg. 37



NW/KF Union

Pg. 32



NW/KF Conversion Centre Ring

Pg. 38



NW/KF Elbow

Pg. 33



NW/KF Clamp

Pg. 39



NW/KF 45° Union

Pg. 34



NW/KF Flexible Hose

Pg. 40

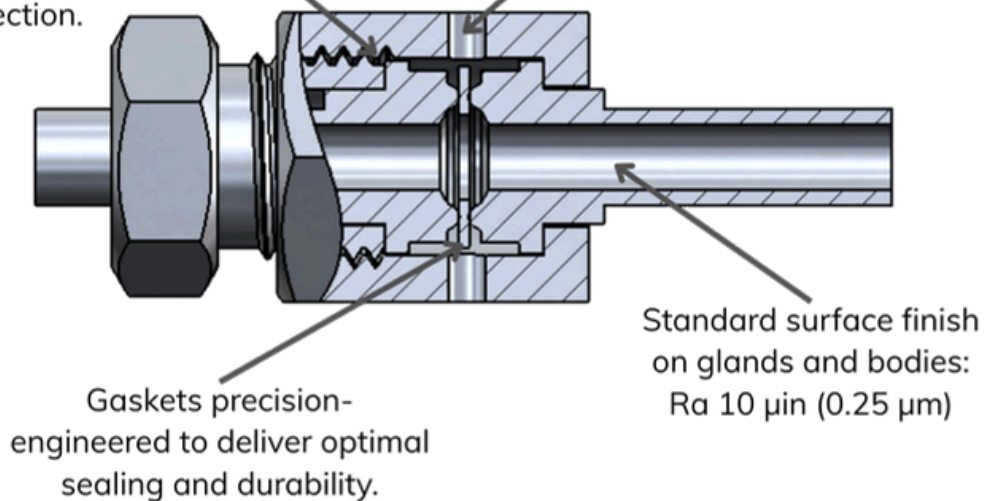
Face Vacuum Fittings

- Indilok Face Vacuum Fittings (FVF) fittings offer the high purity of a metal-to-metal seal, providing leak-tight service from vacuum to positive pressure.
- The seal on a FVF assembly is made when the gasket is compressed by two beads during the engagement of a male nut or body hex and a female nut.
- For every assembly, every female nut has provided with test ports for easy leak test.



Internal threads are silver-plated for smooth assembly, easy maintenance, and reliable anti-galling protection.

Dual test ports provide convenient access for leak verification at multiple points.



Gaskets precision-engineered to deliver optimal sealing and durability.

Standard surface finish on glands and bodies:
Ra 10 μm (0.25 μm)

Technical Data

Pressure Ratings

- Pressure ratings are based on allowable stress value of 20,000psi as specified in ASME B31.3 for 316 stainless steel.
- Pressure ratings of Metal Face vacuum Fittings are determined at room temperature with gasket materials shown.
- For pressure ratings of ASME B31.1, multiply working pressure by 0.94.
- Allowable working pressure at temperatures greater than 100°C (37°C) may be determined by multiple factors in the table below.

Material	SUS316	SUS316L
Temperature, °F (°C)	Factor	
-20 (28) to 100 (37)	1.00	1.00
200 (93)	1.00	0.83
400 (204)	0.96	0.77
600 (315)	0.85	0.67
800 (426)	0.79	0.62
1000 (537)	0.76	0.56

Materials

Material	Designator	Specifications
SUS 316L Single Melt	SM	Bar Stock: ASTM A479 ASTM A276
		Forging: ASTM A182
SUS 316L Double Melt	DM	SEMI SPEC. F20-0706E JIS SPEC. Chemical Composition

SUS: Stainless Steel

Cleaning and Packaging

- All components are ultrasonic cleaned with minimum < 18 MΩ·cm Hot DI water at 55°C - 60°C to remove oil, grease, and loose particles.
- The DI water cleaning system is a closed system that minimizes external particle contamination.
- All fittings are vacuum packed in clean room and sealing faces are protected with plastic caps.

Temperature Rating

Components	Material	Temperature °F (°C)
Fittings	SUS 316L Single Melt	1000 (537)
	SUS 316L Double Melt	
Gaskets	SUS 316L	1000 (537)
	Nickel	600 (315)

Product Grade

Level	Inner Surface Roughness	
	Ra	Ry
EP	≤ 5 μ inch	≤ 0.7 μm
BA	≤ 10 μ inch	≤ 3.0 μm

Chemical Composition

Element	Composition, Wt%									
	C	Si	Mn	P	S	Ni	Cr	Mo	Cu	Al
SUS 316L, Single Melt	≤ 0.03	≤ 1.0	≤ 0.8	≤ 0.045	≤ 0.005	12.0-15.0	16.0-18.0	2.0-3.0	≤ 0.3	-
SUS 316L Double Melt	≤ 0.025	≤ 0.3	≤ 0.4	≤ 0.045	≤ 0.005	14.5-15.0	16.0-17.0	2.2-2.5	≤ 0.03	≤ 0.01

Plating

- VCR female nuts are silver plated at inner side.
- Avoid chemical processes used for cleaning, electropolishing, and passivation that will remove plating.
- If the plating is damaged or removed, thread galling may occur, damaging fitting components and preventing a proper seal.

Testing

- The VCR fitting design has been helium leak tested to a maximum leak rate of 4×10^{-9} std cm³/s with silver-plated and copper gaskets and to a maximum leak rate of 4×10^{-11} std cm³/s with unplated gaskets.

Weld & Metal Face Vacuum Fittings

Ordering Information

FVF	B	C	D	E	F
Product Family	Connection Size	Connection Type	Sleeve Length	Material	Surface Grade

B	Connection Size		
	Designator	Inch	mm
	3	1/8"	3.175
	6	1/4"	6.35
	9	3/8"	9.525
	12	1/2"	12.7

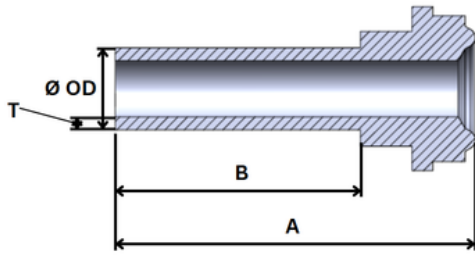
D	Sleeve Length	
	15	15 mm
	16	16 mm
	28	28 mm
	30.5	30.5 mm
	43	43 mm
	45	45 mm

E	Material	
	SM	316L Stainless Steel
	DM	316L Stainless Steel VAR
	NI	Nicket (only for Gasket)

F	Surface Grade	
		Un-polished
	EP	Electro-Polished

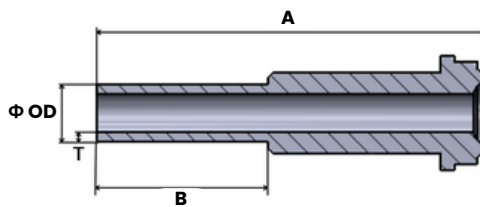
C	Connection Type	
	G	Gland
	BG	Blind Gland
	MN	Male Nut
	FN	Female Nut
	BMN	Blind Male Nut
	BFN	Blind Female Nut
	NRG	Non-Retainer Gasket
	SRG	Side Retainer Gasket
	MU	Male Union
	ME	Male Elbow
	MT	Male Tee
	MC	Male Cross
	WFU	Weld Female Union
	WFE	Weld Female Elbow
	WFT	Weld Female Tee
	WFC	Weld Female Cross
	WMU	Weld Male Union
	WME	Weld Male Elbow
	WMT	Weld Male Tee
	WMC	Weld Male Cross

Gland



Part Number	Tube Size	A		B		OD		T	
		inch	mm	inch	mm	inch	mm	inch	mm
FVF-6-G15	1/4"	0.598	15.2	0.250	6.35	0.250	6.35	0.039	1.0
FVF-6-G28		1.098	27.9	0.750	19.05				
FVF-12-G16	1/2"	0.650	16.5	0.323	8.20	0.500	12.7	0.049	1.24
FVF-12-G28		1.122	28.5	0.750	19.05				

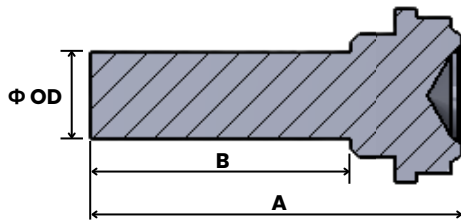
* Above Short Glands are recommended for Female Nut



Part Number	Tube Size	A		B		OD		T	
		inch	mm	inch	mm	inch	mm	inch	mm
FVF-6-G30.5	1/4"	1.201	30.5	0.250	6.35	0.250	6.35	0.039	1.0
FVF-6-G43		1.701	43.2	0.768	19.05				
FVF-12-G45	1/2"	1.791	45.5	0.750	19.05	0.500	12.7	0.049	1.24

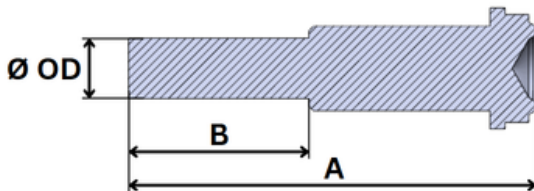
* Above Long Glands are recommended for Male Nut

Blind Gland



Part Number	Rod Size	A		B		OD	
		inch	mm	inch	mm	inch	mm
FVF-6-G28	1/4"	1.098	27.9	0.750	19.05	0.250	6.35
FVF-12-G28	1/2"	1.122	28.5	0.750	19.05	0.500	12.7

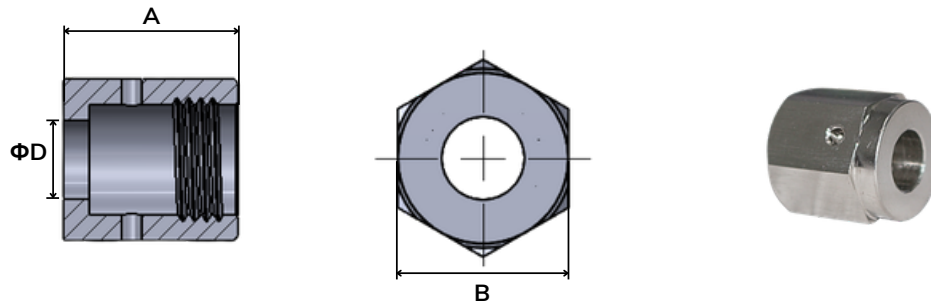
* Above Short Glands are recommended for Female Nut



Part Number	Rod Size	A		B		OD	
		inch	mm	inch	mm	inch	mm
FVF-6-G43	1/4"	1.701	43.2	0.768	19.05	0.250	6.35
FVF-12-G45	1/2"	1.791	45.5	0.750	19.05	0.500	12.7

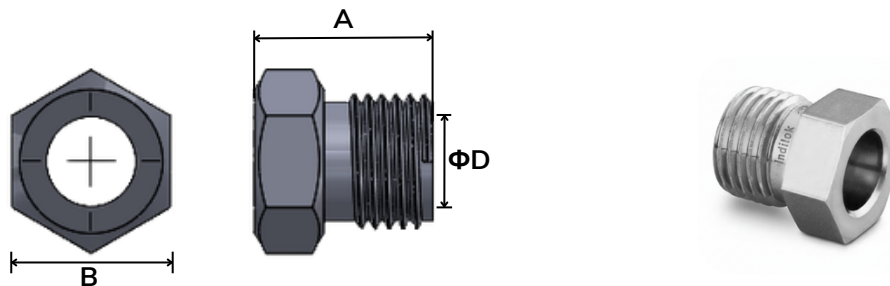
* Above Long Glands are recommended for Male Nut

Female Nut



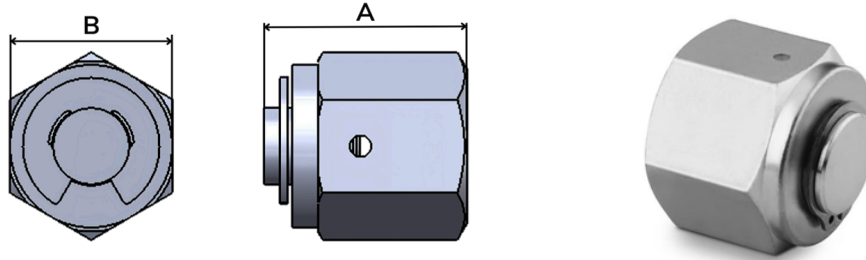
Part Number	Size	A		B		ΦD	
		inch	mm	inch	mm	inch	mm
FVF-6-FN	1/4"	0.815	20.7	0.748	19	0.354	9.1
FVF-12-FN	1/2"	0.886	22.5	1.063	27	0.610	15.5

Male Nut



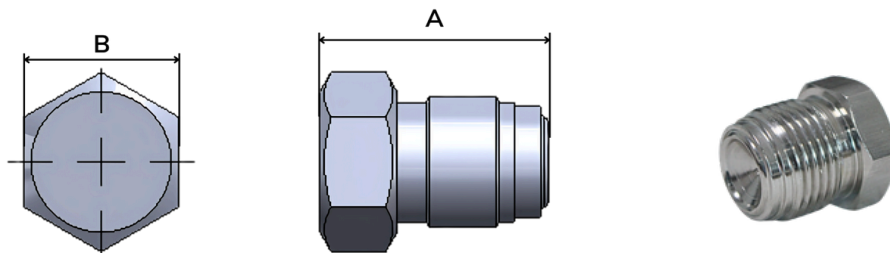
Part Number	Size	A		B		OD	
		inch	mm	inch	mm	inch	mm
FVF-6-FN	1/4"	0.717	18.2	0.622	15.8	0.354	9.1
FVF-12-FN	1/2"	0.811	20.6	0.937	23.8	0.610	15.5

Blind Female Nut



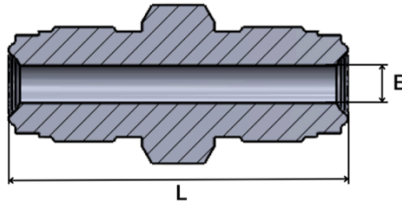
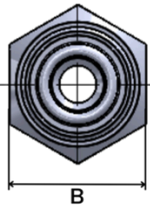
Part Number	Size	A		B	
		inch	mm	inch	mm
FVF-6-FN	1/4"	0.941	23.9	0.748	19
FVF-12-FN	1/2"	1.012	25.7	1.063	27

Blind Male Nut



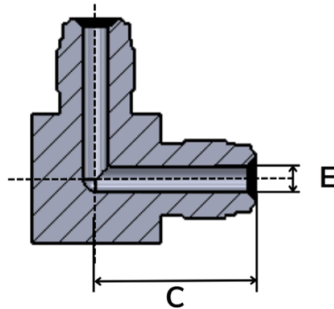
Part Number	Size	A		B	
		inch	mm	inch	mm
FVF-6-FN	1/4"	0.921	23.4	0.622	15.8
FVF-12-FN	1/2"	1.079	27.4	0.937	23.8

Male Union



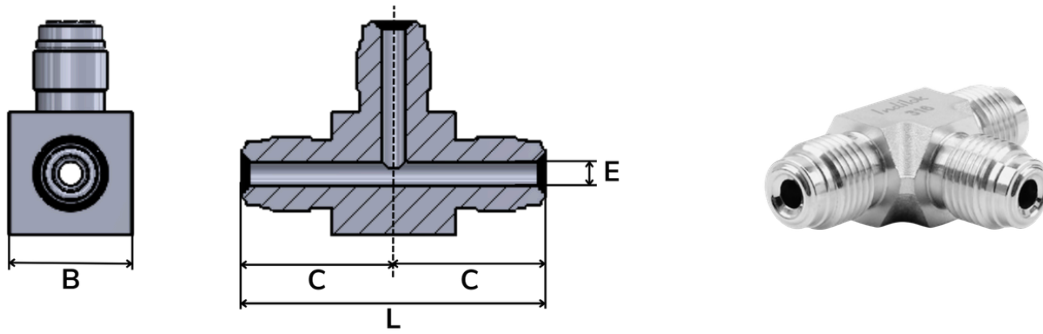
Part Number	Size	L		B		E	
		inch	mm	inch	mm	inch	mm
FVF-6-MU	1/4"	1.551	39.4	0.622	15.8	0.169	4.3
FVF-12-MU	1/2"	1.839	46.7	0.937	23.8	0.402	10.2

Male Elbow



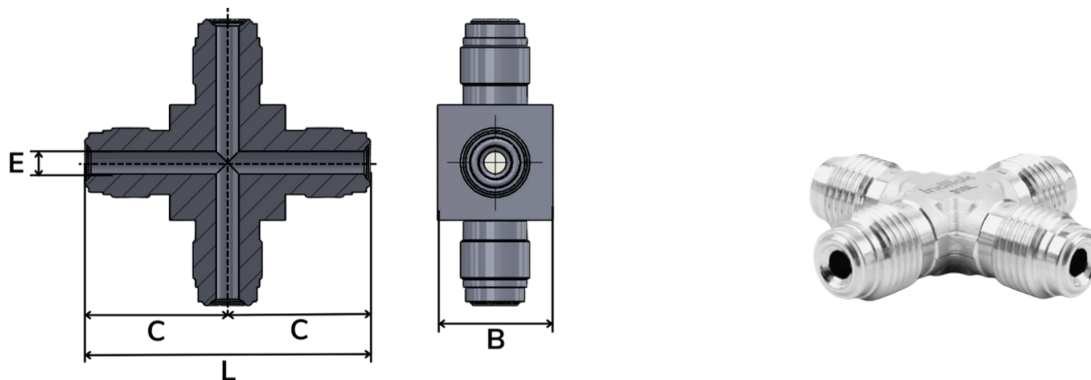
Part Number	Size	C		B		E	
		inch	mm	inch	mm	inch	mm
FVF-6-ME	1/4"	1.071	27.2	0.669	17	0.171	4.35
FVF-12-ME	1/2"	1.449	36.8	0.984	25	0.402	10.22

Male Tee



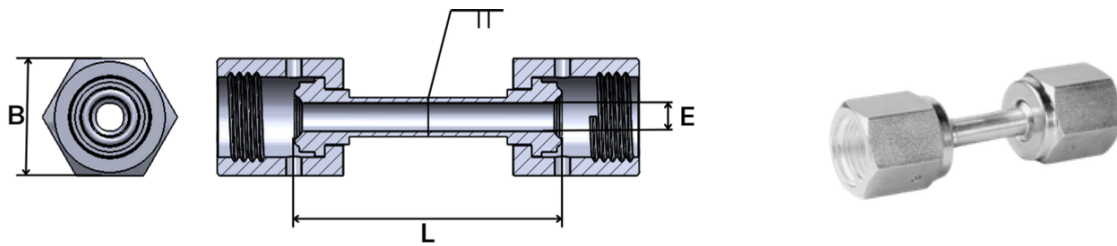
Part Number	Size	C		B		E		L	
		inch	mm	inch	mm	inch	mm	inch	mm
FVF-6-MT	1/4"	1.071	27.2	0.669	17	0.171	4.35	2.142	54.4
FVF-12-MT	1/2"	1.449	36.8	0.984	25	0.402	10.22	2.898	73.6

Male Cross



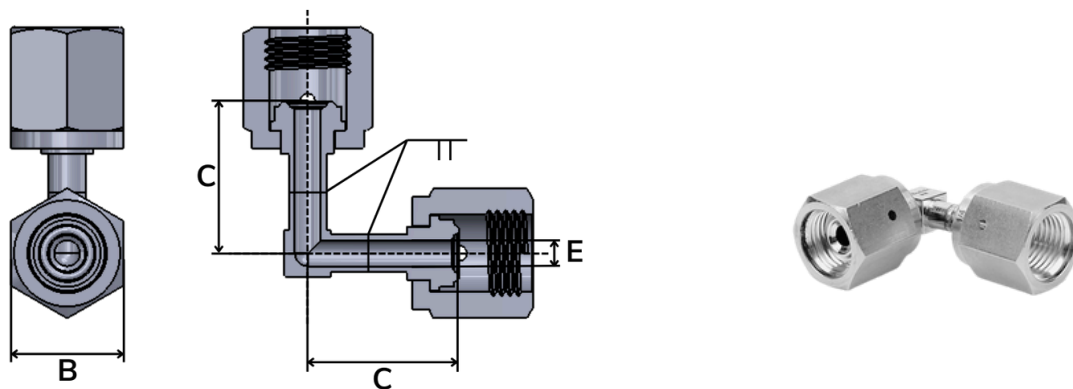
Part Number	Size	C		B		E		L	
		inch	mm	inch	mm	inch	mm	inch	mm
FVF-6-MC	1/4"	1.071	27.2	0.669	17	0.171	4.35	2.142	54.4
FVF-12-MC	1/2"	1.449	36.8	0.984	25	0.402	10.22	2.898	73.6

Weld Female Union



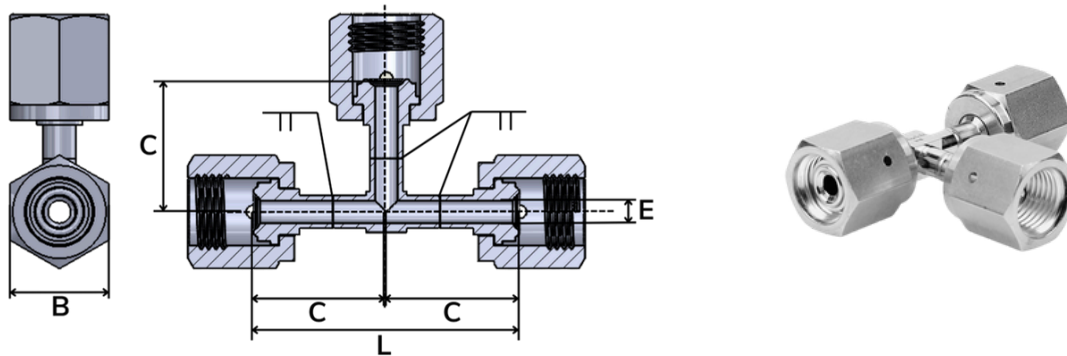
Part Number	Size	B		E		L	
		inch	mm	inch	mm	inch	mm
FVF-6-WFU	1/4"	0.748	19	0.171	4.35	1.709	43.4
FVF-12-WFU	1/2"	1.063	27	0.402	10.20	1.850	47

Weld Female Elbow



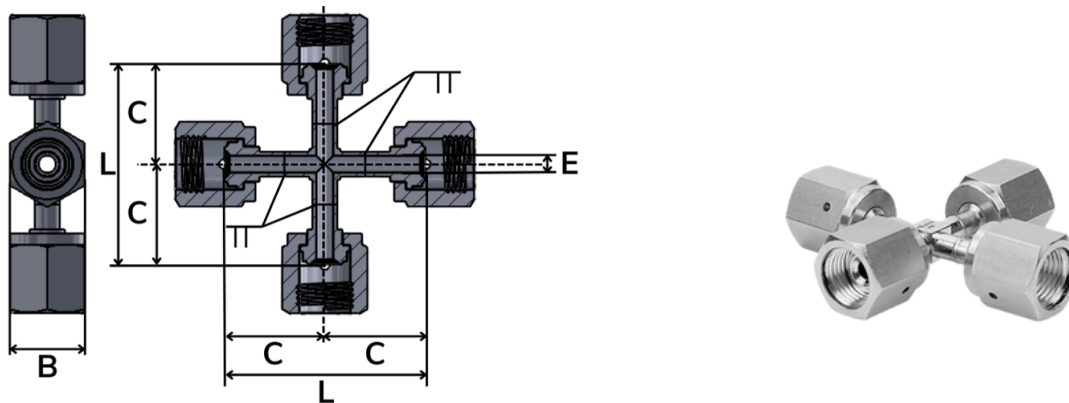
Part Number	Size	C		B		E	
		inch	mm	inch	mm	inch	mm
FVF-6-WFE	1/4"	1.000	25.4	0.748	19	0.171	4.35
FVF-12-WFE	1/2"	1.173	29.8	1.063	27	0.402	10.2

Weld Female Tee



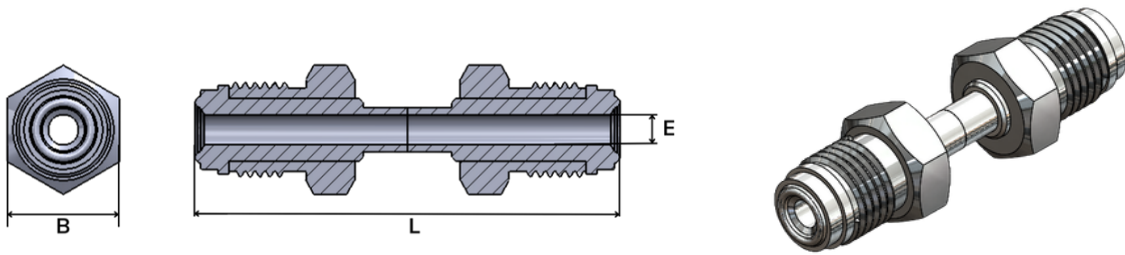
Part Number	Size	C		B		E		L	
		inch	mm	inch	mm	inch	mm	inch	mm
FVF-6-WFT	1/4"	1.000	25.4	0.748	19	0.171	4.35	2.000	50.8
FVF-12-WFT	1/2"	1.173	29.8	1.063	27	0.402	10.2	2.346	59.6

Weld Female Cross



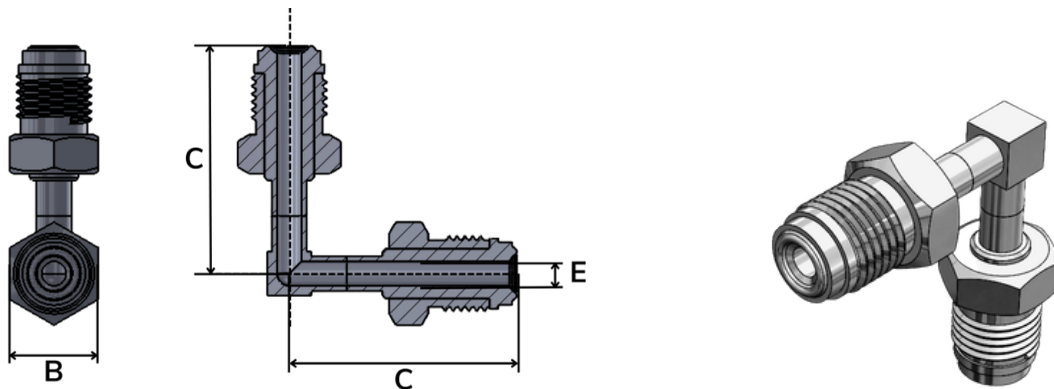
Part Number	Size	C		B		E		L	
		inch	mm	inch	mm	inch	mm	inch	mm
FVF-6-WFC	1/4"	1.000	25.4	0.748	19	0.171	4.35	2.000	50.8
FVF-12-WFC	1/2"	1.173	29.8	1.063	27	0.402	10.2	2.346	59.6

Weld Male Union



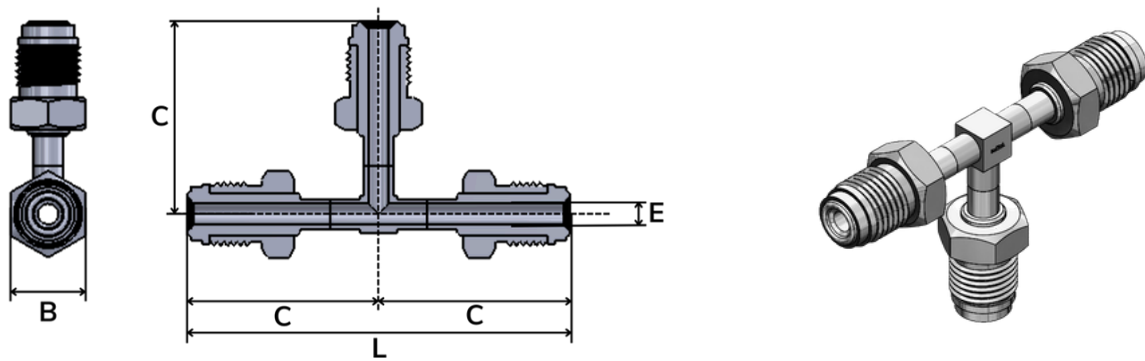
Part Number	Size	B		E		L	
		inch	mm	inch	mm	inch	mm
FVF-6-WFT	1/4"	0.622	15.8	0.171	4.35	2.402	61
FVF-12-WFT	1/2"	0.937	23.8	0.402	10.2	2.520	64

Weld Male Elbow



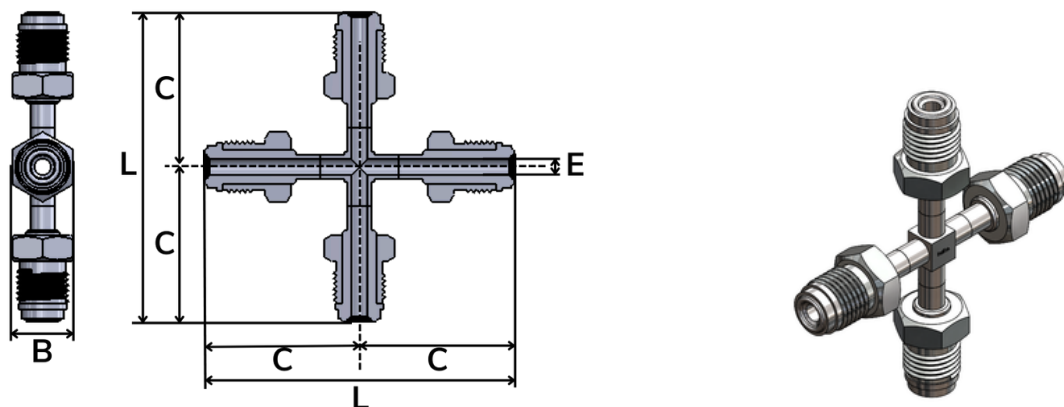
Part Number	Size	C		B		E	
		inch	mm	inch	mm	inch	mm
FVF-6-WFC	1/4"	1.600	40.65	0.622	15.8	0.171	4.35
FVF-12-WFC	1/2"	1.783	45.3	0.937	23.8	0.402	10.2

Weld Male Tee



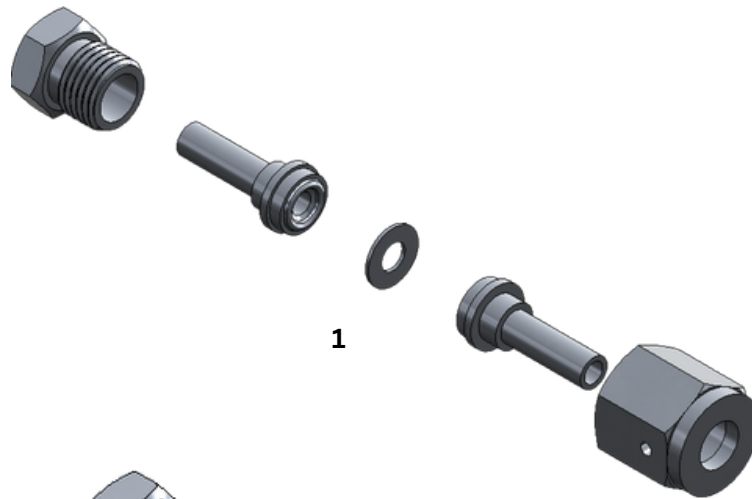
Part Number	Size	C		B		E		L	
		inch	mm	inch	mm	inch	mm	inch	mm
FVF-6-WFT	1/4"	1.600	40.65	0.622	15.8	0.171	4.35	3.201	81.3
FVF-12-WFT	1/2"	1.783	45.3	0.937	23.8	0.402	10.2	3.567	90.6

Weld Male Cross

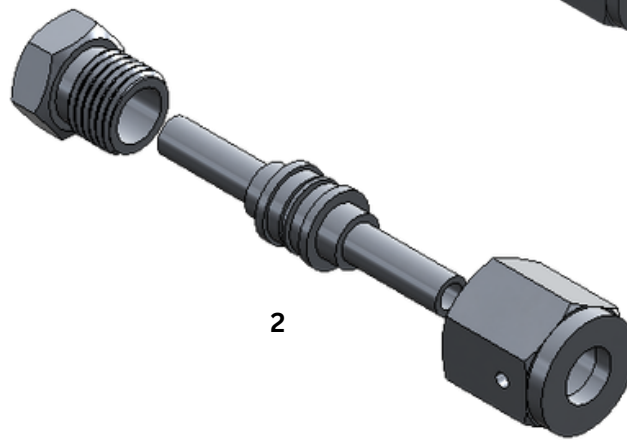


Part Number	Size	C		B		E		L	
		inch	mm	inch	mm	inch	mm	inch	mm
FVF-6-WFC	1/4"	1.600	40.65	0.622	15.8	0.171	4.35	3.201	81.3
FVF-12-WFC	1/2"	1.783	45.3	0.937	23.8	0.402	10.2	3.567	90.6

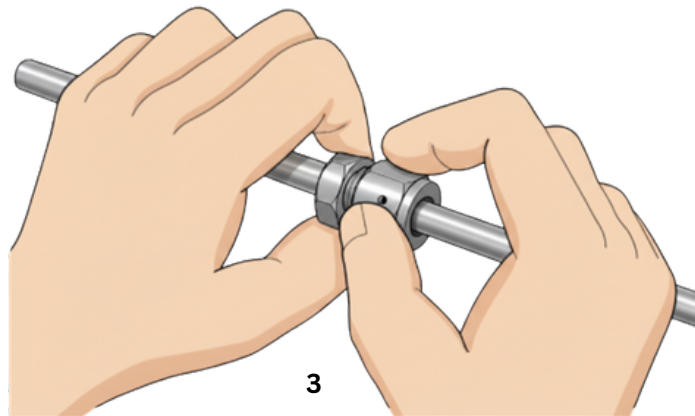
FVF Installation Guide



1

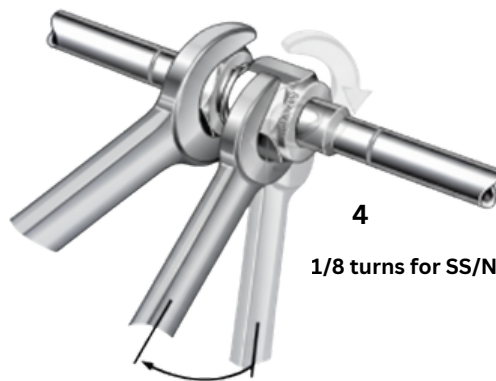


2



3

Finger-tight



4

1/8 turns for SS/Ni

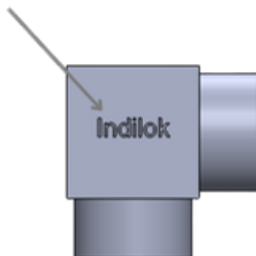
Micro Weld Fittings

Features

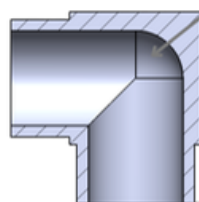
- Compact design for mainly gas lines
- Suitable for miniature tubing system
- Allows close component spacing
- Provides flow capacity equal to larger weld fittings



Ultra High Purity Fittings are marked with the Manufacturer.

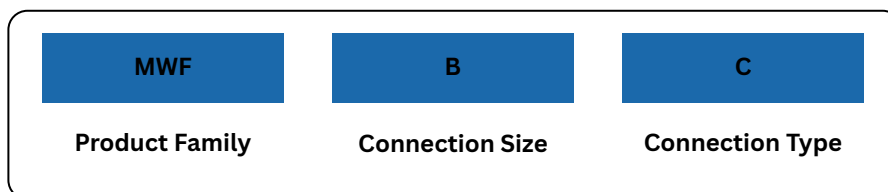


Engineered junction promotes smooth flow and eliminated stagnation zones.



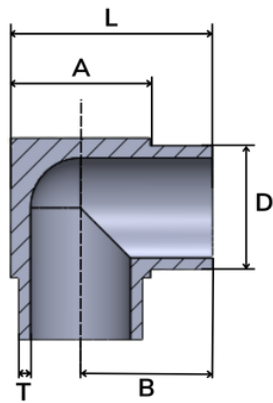
Precisely cut, burr-free tube ends ensure accurate alignment, with flatness tolerances maintained as per GD&T standards for optimal sealing performance.

Ordering Information



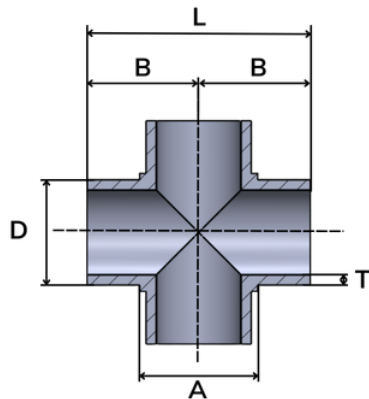
Product Family (A)	Connection Size (B)	Connection Type (C)
Micro Weld Fittings (MWF)	3 - 1/8"	AT - Angle Tee
	6 - 1/4"	T - Tee
	9 - 3/8"	C - Cross
	12 - 1/2"	E - Elbow

Elbow



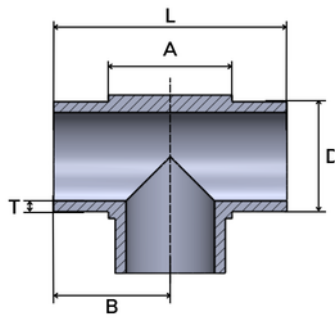
Part Number	Size	D		T		B		A		L	
		inch	mm	inch	mm	inch	mm	inch	mm	inch	mm
MWF6E	1/4"	0.250	6.35	0.039	1	0.406	10.32	0.313	7.94	0.563	14.29
MWF12E	1/2"	0.500	12.7	0.049	1.24	0.531	13.50	0.563	14.29	0.813	20.64

Cross



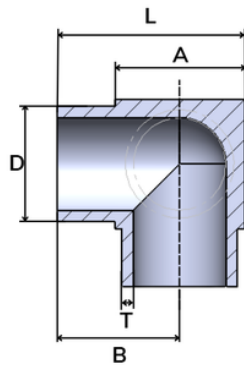
Part Number	Size	D		T		B		A		L	
		inch	mm	inch	mm	inch	mm	inch	mm	inch	mm
MWF6E	1/4"	0.250	6.35	0.039	1.00	0.406	10.32	0.313	7.94	0.813	20.64
MWF12E	1/2"	0.500	12.7	0.049	1.24	0.531	13.5	0.563	14.29	1.063	27

Tee



Part Number	Size	D		T		B		A		L	
		inch	mm	inch	mm	inch	mm	inch	mm	inch	mm
MWF6E	1/4"	0.250	6.35	0.039	1	0.406	10.32	0.313	7.94	0.813	20.64
MWF12E	1/2"	0.500	12.7	0.049	1.24	0.531	13.5	0.563	14.29	1.063	27

Angle Tee



Part Number	Size	D		T		B		A		L	
		inch	mm	inch	mm	inch	mm	inch	mm	inch	mm
MWF6E	1/4"	0.250	6.35	0.039	1	0.406	10.32	0.313	7.94	0.563	14.29
MWF12E	1/2"	0.500	12.7	0.049	1.24	0.531	13.5	0.563	14.29	0.813	20.64

Reducer



Part Number	Size	OD1		T1		OD2		T2		R	
		inch	mm	inch	mm	inch	mm	inch	mm	inch	mm
MWF84R	1/2"*1/4"	0.500	12.70	0.049	1.24	0.250	6.35	0.039	1	0.201	5.10

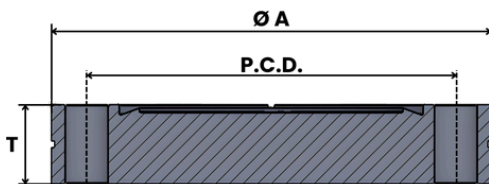
ICF Flange

ICF Blank Flange

- Blank flanges for sealing and machining
- Knife-edge seals and gaskets for ultra-high vacuum applications
- Fastening method: Bolt fastening
- Through holes for fastening

The following types are standardized

- Flange sizes (ICF): 34, 54, 70, 114, 152, 203, 253.
- Material: SUS316L / SUS304



Part Number	Size	A	P.C.D.	T	Bolt hole Diameter	No. of bolt holes
ICF-34-B	34	34	27	7.5	Ø 4.4	6
ICF-54-B	54	54	41.3	11.9	Ø 6.7	4
ICF-70-B	70	70	58.7	12.7	Ø 6.8	6
ICF-114-B	114	114	92.2	17.5	Ø 8.4	8
ICF-152-B	152	152	130.3	20	Ø 8.4	16
ICF-203-B	203	203	181	22	Ø 8.4	20
ICF-253-B	253	253	231.8	25	Ø 8.4	24

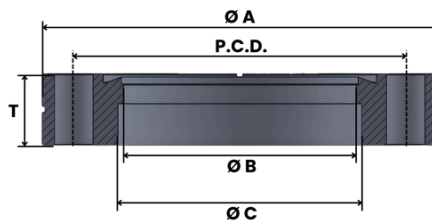
ICF Flange

ICF Fixed Perforated Flange

- Perforated Flanges for machining
- Ultra-high vacuum compatible with knife-edge seals and gaskets
- Fastening method: Bolt fastening
- Through holes for fastening

The following types are standardized

- Flange sizes (ICF): 34, 70, 114, 152, 203, 253
- Material: SUS316L / SUS304



Part Number	Size	A	B	C	P.C.D.	T	Applicable pipe outer diameter	Bolt hole Diameter	No. of bolt holes
ICF-34-P-6.4	34	34	5.8	6.4	27	7.5	6.35	Ø 4.4	6
ICF-34-P-12.8	34	34	12.2	12.8	27	7.5	12.7	Ø 4.4	6
ICF-34-P-19.3	34	34	16	19.3	27	7.5	19.1	Ø 4.4	6
ICF-70-P-42.7	70	70	41.1	43.1	58.7	12.7	42.7	Ø 6.8	6
ICF-114-P-70.3	114	114.3	68.3	70.1	92.2	17.3	69.9	Ø 8.4	8
ICF-152-P-101.6	152	152	97	102	130.3	20	101.6	Ø 8.4	16
ICF-203-P-153	203	203	148.5	153.5	181	22	153	Ø 8.4	20
ICF-253-P-203	253	253	198.5	203.5	231.8	25	203	Ø 8.4	24

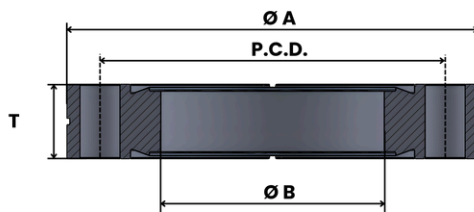
ICF Flange

ICF Double-Sided Edge Perforated Flanges

- Perforated Flanges for Machining with sealing edge at both sides of flange.
- Ultra-high vacuum compatible with knife-edge seals and gaskets
- Fastening method: Bolt fastening
- Through holes for fastening

The following types are standardized

- Flange sizes (ICF): 34, 70, 114, 152, 203, 253
- Material: SUS316L / SUS304



Part Number	Size	A	B	P.C.D.	T	Bolt hole Diameter	No. of bolt holes
ICF-34-DS	34	34	16	27	7.5	Ø 4.4	6
ICF-70-DS	70	70	38	58.7	12.7	Ø 6.8	6
ICF-114-DS	114	114	64	92.2	17.5	Ø 8.4	8
ICF-152-DS	152	152	101.9	130.3	20	Ø 8.4	16
ICF-203-DS	203	203	153	181	22	Ø 8.4	20
ICF-253-DS	253	253	203	231.8	25	Ø 8.4	24

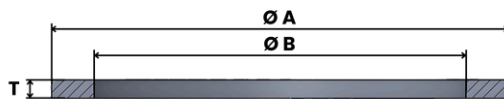
ICF Gasket

ICF Gaskets

- Metal seals for ICF flanges
- Each gasket is individually vacuum-packed

The following types are standardized

- Compatible flanges (ICF): 34, 54, 70, 114, 152, 203, 253.
- Material: Copper, Aluminum.

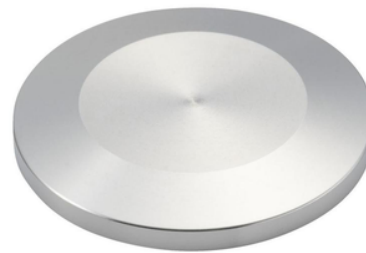
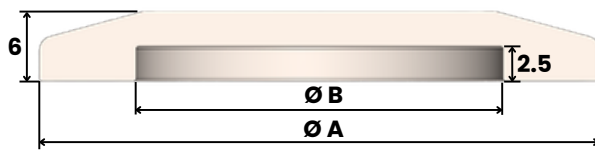


Part Number	Size	A	B	T
ICF-34-G	34	21.3	16.3	2
ICF-54-G	54	32.8	25.7	2
ICF-70-G	70	48.2	39	2
ICF-114-G	114	82.4	63.6	2
ICF-152-G	152	120.5	101.8	2
ICF-203-G	203	171.3	152.6	2
ICF-253-G	253	222.1	203.2	2

NW/KF Flange

Blank Flange

- Blank flanges for sealing and machining
- Flange size (NW/KF): 10, 16 , 25, 40, 50
- Material: SUS316L / SUS304

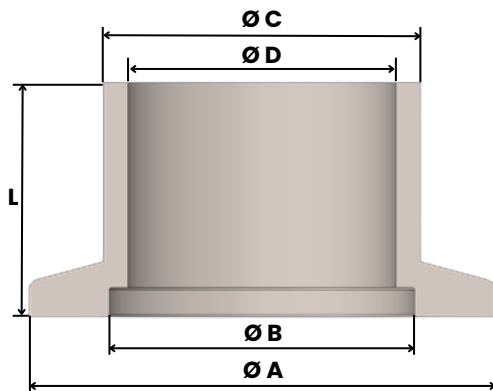


Part Number	A	B
NW-10-BF	30	12.2
NW-16-BF	30	17.2
NW-25-BF	40	26.2
NW-40-BF	55	41.2
NW-50-BF	75	52.2

NW/KF Flange

NW/KF Short & Long Flange

- Flange with Perforated Piping
- Material: SUS316 / SUS304
- Flange Size (NW/KF): 10, 16, 25, 40, 50
- Length: 20, 50



Part Number	A	B	C	D	L
NW-10-20L	30	12.2	13.8	10	20
NW-10-50L	30	12.2	13.8	10	50
NW-16-20L	30	17.2	17.5	17.5	20
NW-16-50L	30	17.2	17.5	17.5	50
NW-25-20L	40	26.2	23	23	20
NW-25-50L	40	26.2	23	23	50
NW-40-20L	55	41.2	37.1	37.1	20
NW-40-50L	55	41.2	37.1	37.1	50
NW-50-20L	75	52.2	55	55	20
NW-50-50L	75	52.2	55	55	50

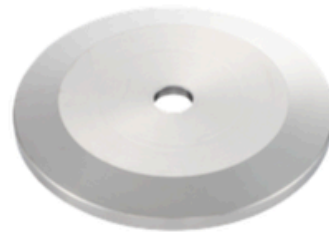
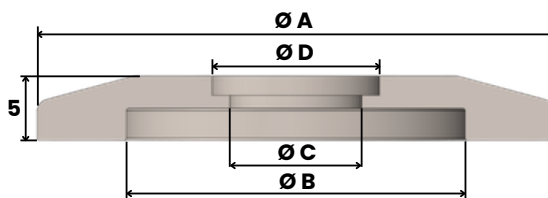
NW/KF Flange

NW/KF Perforated Flange

- Perforated flanges for machining / welding of pipes or fittings
- All diameters have a step for easy pipe fixing

The following types are standardized

- Flange sizes (NW/KF): 10, 16, 25
- Hole diameter (inches): 1/2, 1/4.
- Material: SUS316L / SUS304



Part Number	Effective Inner Diameter	A	B	C	D
NW-10PF-1/4	1/4 inch	30	12.2	4.4	6.5
NW-16PF-1/2	1/2 inch	30	17.2	10.2	12.95
NW-16PF-1/4	1/4 inch	30	17.2	4.4	6.5
NW-25PF-1/2	1/2 inch	40	26.2	10.2	12.95
NW-25PF-1/4	1/4 inch	40	26.2	4.4	6.5

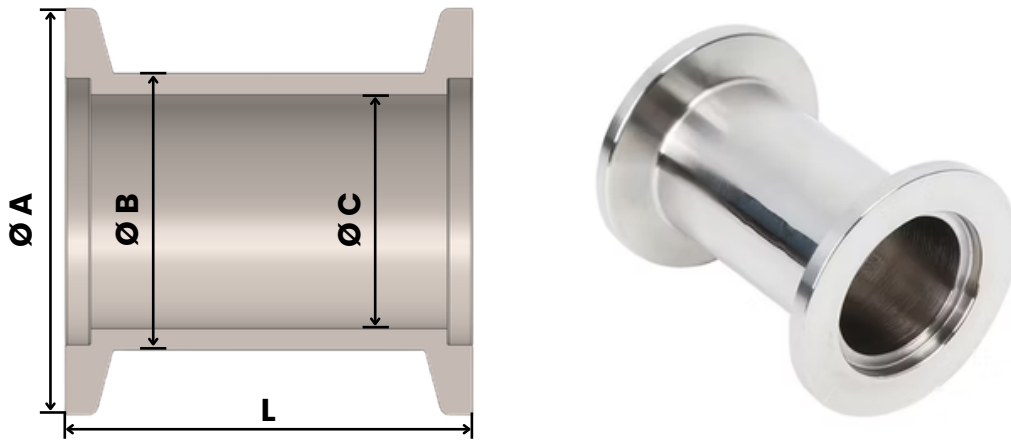
NW/KF Union

NW/KF Union

- Used for length adjustment of piping.

The following types are standardized

- Compatible flanges (NW/KF): 10, 16, 25, 40, 50
- Material: SUS316L / SUS304



Part Number	NW/KF	A	B	C	L
NW-10-U	10	30	12.7	9.5	100
NW-16-U	16	30	19	16	100
NW-25-U	25	40	25.4	22.5	100
NW-40-U	40	55	38.1	35	100
NW-50-U	50	75	50.8	47.6	100

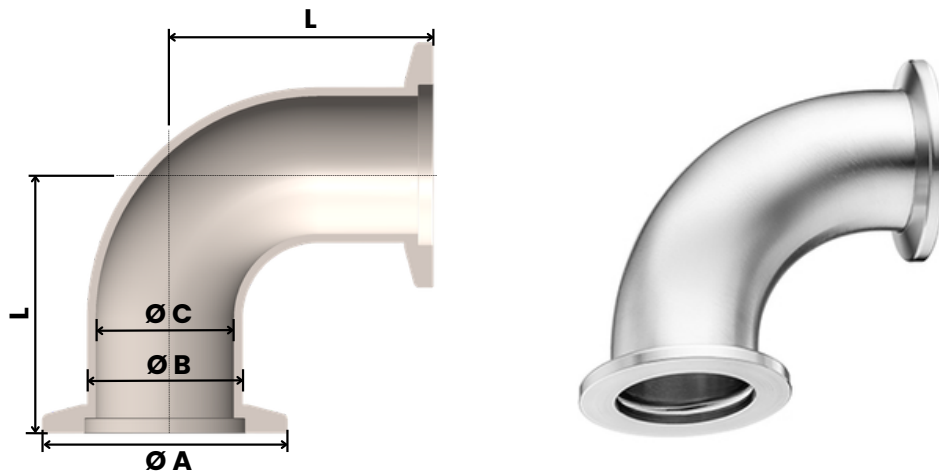
NW/KF Elbow 90 Deg

NW/KF Elbow

- Used for length adjustment of piping.

The following types are standardized

- Compatible flanges (NW/KF): 10, 16, 25, 40, 50
- Material: SUS316L / SUS304



Part Number	NW/KF	A	B	C	L
NW-10-E90	10	30	12.7	9.5	30
NW-16-E90	16	30	19	16	40
NW-25-E90	25	40	25.4	22.5	50
NW-40-E90	40	55	38.1	35	65
NW-50-E90	50	75	50.8	47.6	80

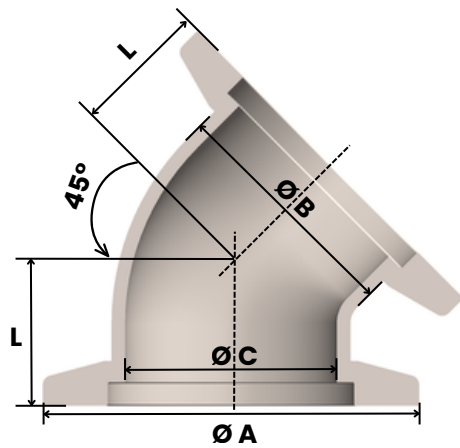
NW/KF Elbow 45 Deg

NW/KF 45deg. Connector

- Used for length adjustment of piping.

The following types are standardized

- Compatible flanges (NW/KF): 10, 16, 25, 40, 50
- Material: SUS316L / SUS304



Part Number	NW/KF	A	B	C	L
NW-10-E45	10	30	12.7	9.5	20
NW-16-E45	16	30	19	16	23
NW-25-E45	25	40	25.4	22.5	28
NW-40-E45	40	55	38.1	35	43
NW-50-E45	50	75	50.8	47.6	51

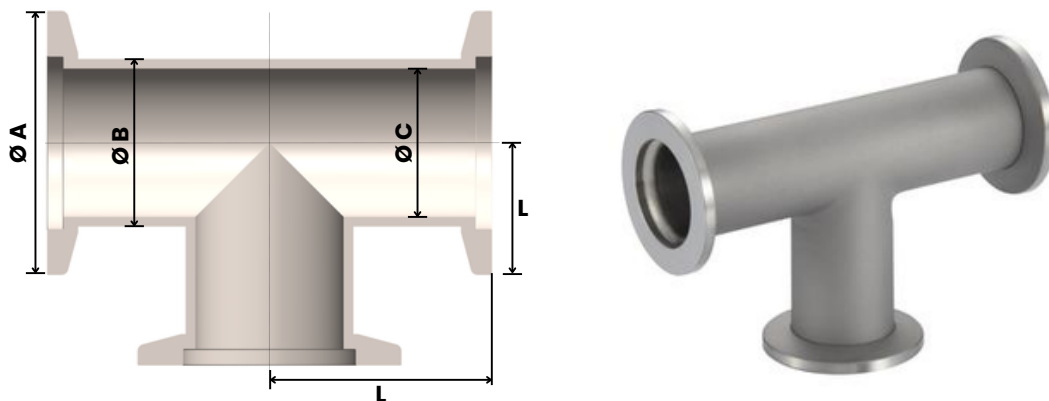
NW/KF TEE

NW/KF TEE

- Used for length adjustment of piping.

The following types are standardized

- Compatible flanges (NW/KF): 10, 16, 25, 40, 50
- Material: SUS316L / SUS304



Part Number	NW/KF	A	B	C	L
NW-10-T	10	30	12.7	9.5	30
NW-16-T	16	30	19	16	40
NW-25-T	25	40	25.4	22.5	50
NW-40-T	40	55	38.1	35	65
NW-50-T	50	75	50.8	47.6	80

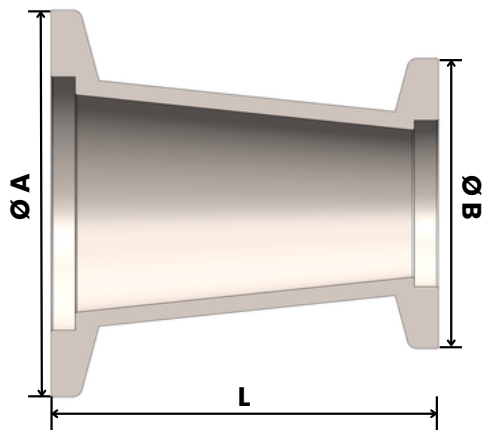
NW/KF Reducer

NW/KF Reducer

- Used for adjusting the diameter of piping.

The following types are standardized

- Compatible flanges (NW/KF): 16/25, 16/40, 25/40, 25/50
- Guide materials: SUS316L / SUS304



Part Number	NW/KF	B	A	L
NW-16/25-RED	16/25	30	40	40
NW-16/40-RED	16/40	30	55	40
NW-25/40-RED	25/40	40	55	40
NW-25/50-RED	25/50	40	75	40

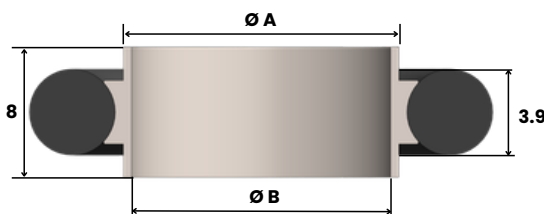
NW/KF Center-Ring

NW/KF Centering Rings

- For NW/KF flanges (metal piping)
- One-touch connection with the inner ring guide

The following types are standardized

- Compatible flanges (NW/KF): 10, 16, 25, 40, 50
- Guide material: SUS316L / SUS304
- O-ring material: Viton, Nitrile
- O-ring alone (Viton® / Nitrile)



Part Number	A	B
NW-10-CR	12	10
NW-16-CR	17	16
NW-25-CR	26	25
NW-40-CR	41	40
NW-50-CR	52	50

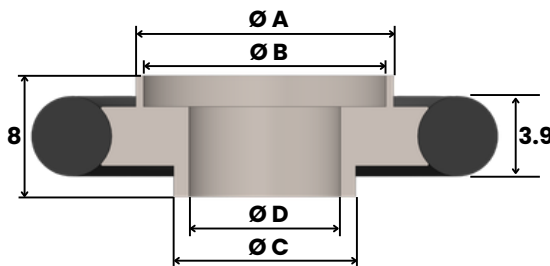
NW/KF Conversion Centre ring

NW/KF Conversion Centre ring

- For NW/KF flanges (metal piping)
- One-touch connection with the inner ring guide

The following types are standardized

- Compatible flange (NW/KF): 10/16
- Guide material: SUS316L / SUS304
- O-ring material: Viton, Nitrile
- O-ring alone (Viton® / Nitrile)



Part Number	NW/KF	A	B	C	D
NW-16/10-CCR	16/10	17	16	12	10

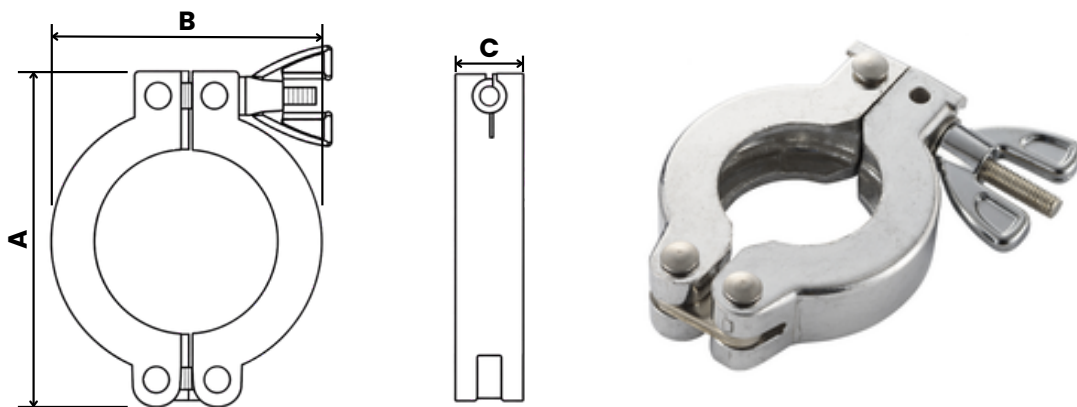
NW/KF Clamp

NW/KF Clamp

- For NW/KF flanges (metal piping)
- Compatible flanges (NW/KF): 10, 16, 25, 40, 50

Material:

- Body: Aluminum (ADC12)
- Bolt: Iron - Nickel-plated
- Wing nut: Zinc alloy - Nickel-plated
- Pin: Iron - Zinc-plated
- Link: Iron - Nickel-plated
- Washer: Iron - Nickel-plated



Part Number	NW/KF	A	B	C
NW-10-CL	10	62.5	40	16
NW-16-CL	16	62.5	40	16
NW-25-CL	25	73	53	16
NW-40-CL	40	89	70	16
NW-50-CL	50	122	92	22

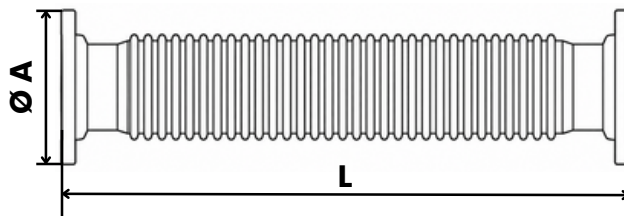
NW/KF Flexible Hose

NW/KF Flexible Hose

- Used for Connection to vacuum pumps.

The following types are standardized

- Compatible flanges (NW/KF): 16, 25, 40, 50
- Available Sizes: 0.5m, 1m, 2m Length
- Material: SUS304



Part Number	NW/KF	A	L
NW-16-FH-0.5M	16	30	500
NW-16-FH-1M	16	30	1000
NW-16-FH-2M	16	30	2000
NW-25-FH-0.5	25	40	500
NW-25-FH-1M	25	40	1000
NW-25-FH-2M	25	40	2000
NW-40-FH-0.5M	40	55	500
NW-40-FH-1M	40	55	1000
NW-40-FH-2M	40	55	2000
NW-50-FH-0.5M	50	75	500
NW-50-FH-1M	50	75	1000
NW-50-FH-2M	50	75	2000

Indilok[®]

Website : www.indilok.com

Contact Us : info@indilok.com